



# AUCTION

LEADING THE INDUSTRY SINCE 1945

**WEDNESDAY - DECEMBER 13, 2017 - 11:30 AM**  
**REAL ESTATE SELLS AT 12:00 PM**

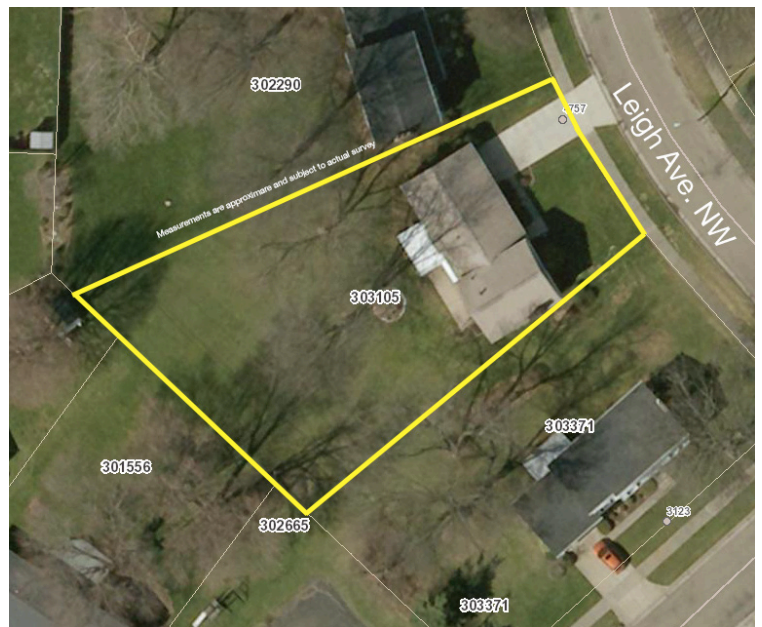
## Clean 3-Bedroom Home

PLAIN LSD - STARK COUNTY

Also Selling: Furniture - Jewelry - Glassware & Household Items

**ABSOLUTE AUCTION**, All sells to highest bidders on location:  
**4757 LEIGH AVE. NW, CANTON, OH 44709**

**Directions:** From Whipple Ave. go east on Everhard Rd., then south onto Elberta Ave., then take the second left onto Dapplegray and the second right onto Leigh Ave. to the property. Watch for KIKO signs.



Information is believed to be accurate but not guaranteed.



**330.455.9357 • kikoauctions.com**





**KIKO AUCTIONEERS**

2722 Fulton Dr. NW, Canton, OH 44718  
kikoauctions.com

**WEDNESDAY - DECEMBER 13, 2017 - 11:30 AM**  
**REAL ESTATE SELLS AT 12:00 PM**

## CLEAN 3-BEDROOM HOME

Plain LSD - Stark County  
Also Selling: Furniture - Jewelry  
Glassware & Household Items



**Members - State and National Auctioneers Association**



One-owner brick and vinyl split-level home w/ 1,664 sq. ft. Home features living room w/ loads of natural light. Open concept dining room, kitchen w/appliances and plenty of cabinetry. Master bedroom w/ full bath and double closets. Two additional nice sized bedrooms & full bath. Walkout lower level has spacious family room w/ wood-burning fireplace, half bath and laundry room w/ washer & dryer. Gas F/A furnace & central air. 2-car attached garage leads to nice covered patio. Conveniently located with easy access to highway, shopping, and restaurants. Public utilities. Parcel #303105. Half year taxes \$1005.27 Great opportunity to own a quality home close to amenities!

**TERMS ON REAL ESTATE:** 15% down auction day, balance due at closing. A 10% buyer's premium will be added to the highest bid to establish the purchase price, which goes to the seller. Any desired inspections must be made prior to bidding. All information contained herein was derived from sources believed to be correct. Information is believed to be accurate but not guaranteed.

**FURNITURE:** 3-pc. bedroom suite incl.: full bed, chest of drawers, dresser w/ mirror - Maple dining table incl. 6 chairs (2 captains) & 2 leafs - Maple telephone stand w/ seat - Maple drop-leaf stand - 3-pc. set incl. (2) end tables & coffee table - (3) swivel arm chairs - Hitchcock style rocker - Lighted curio cabinet - 3-pc. marble-top set incl. (2) end tables & coffee table - Lighted maple corner cabinet - Floral loveseat (2) three-cushion sofas - 2-drawer file cabinet - (2) upholstered arm chairs - Modern lamps - Credenza - Wicker loveseat & coffee table.

**GLASSWARE/HOUSEHOLD:** Hobnail milk glass lamp - Sconces - Framed prints - Porcelain dolls - Costume jewelry - Banquet lamp - Asst. pattern glass - Asst. figurines incl. Precious Moments, angels & ladies - Candlestick holders - Asst. cups & saucers - Cranberry creamer - Blankets/linens - Assorted women's purses - (2) Aluminum step ladders - Christmas decor - Usual household and kitchenware.

**TERMS ON CHATTELS:** Driver's license or State ID required to register for bidder number. Cash, Check, Debit Card, Visa, or MasterCard accepted. 4% buyer's premium on all sales, 4% waived for cash or check. Information is believed to be accurate but not guaranteed.

**AUCTION BY ORDER OF:** The Mary F. Sweesy Living Trust, Patricia A. Shea Successor Trustee



Apprentice Auctioneer/Realtor®  
**ASHLEY RITCHEY**  
330-495-3474  
ashley@kikocompany.com



Auctioneer/Realtor®  
**RANDALL L. KIKO**  
330-831-0174  
randall@kikocompany.com



Auctioneer/Realtor®  
**BROOKS E. AMES**  
330-703-2732  
brooks@kikocompany.com



**330.455.9357 • kikoauctions.com**

